

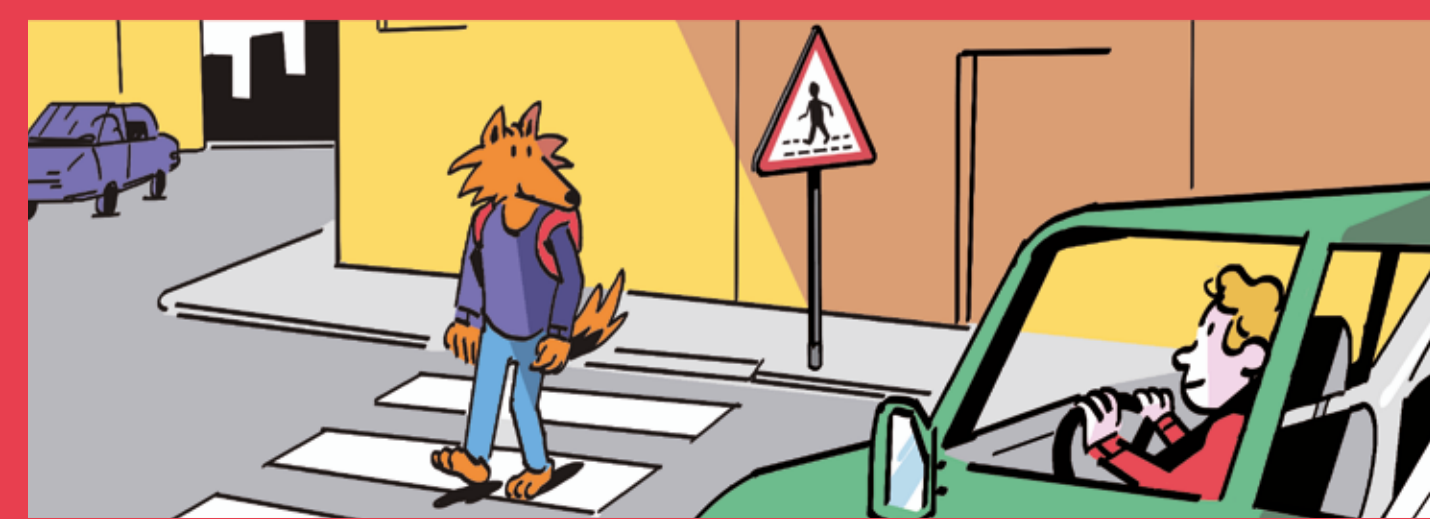
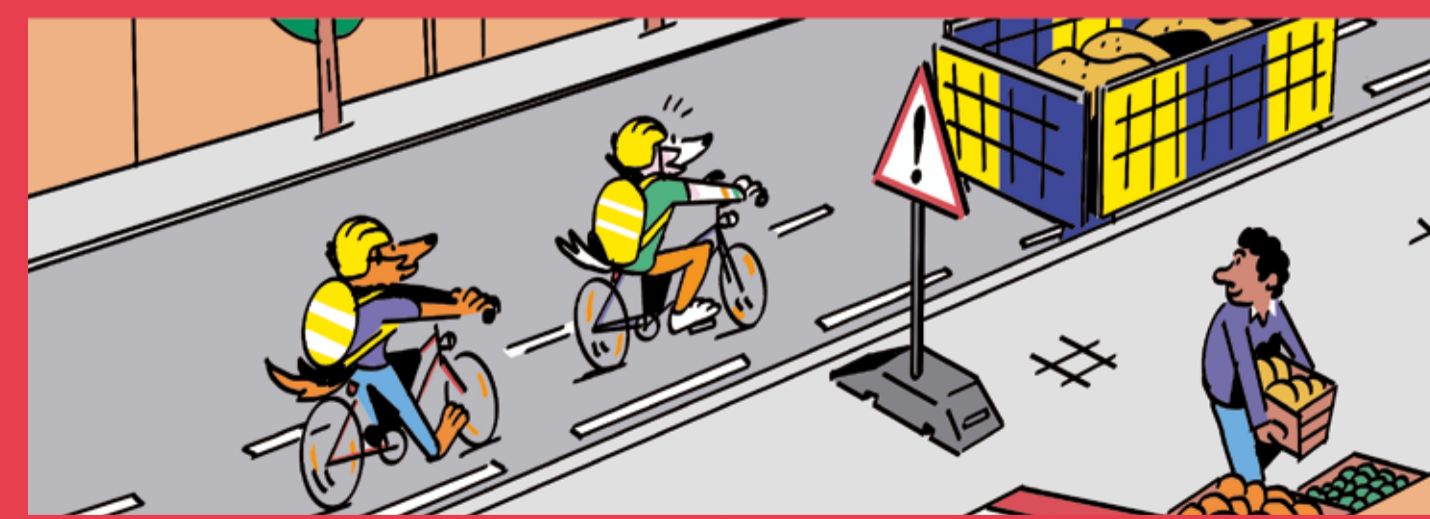
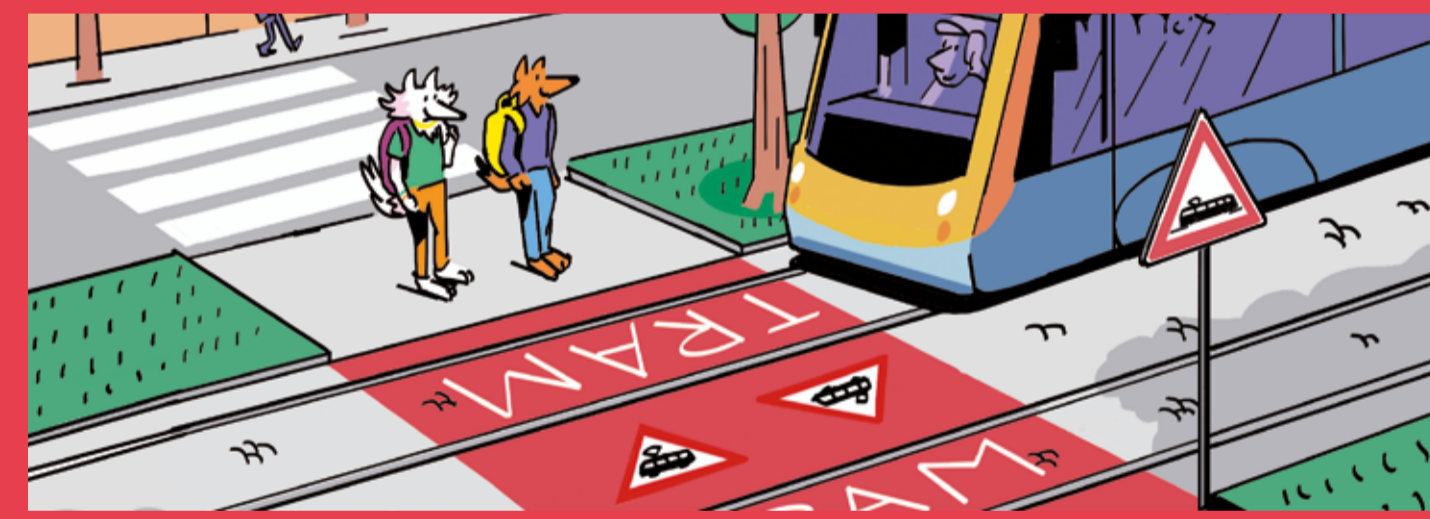
# Connais-tu les signaux routiers sur le chemin de l'école ?



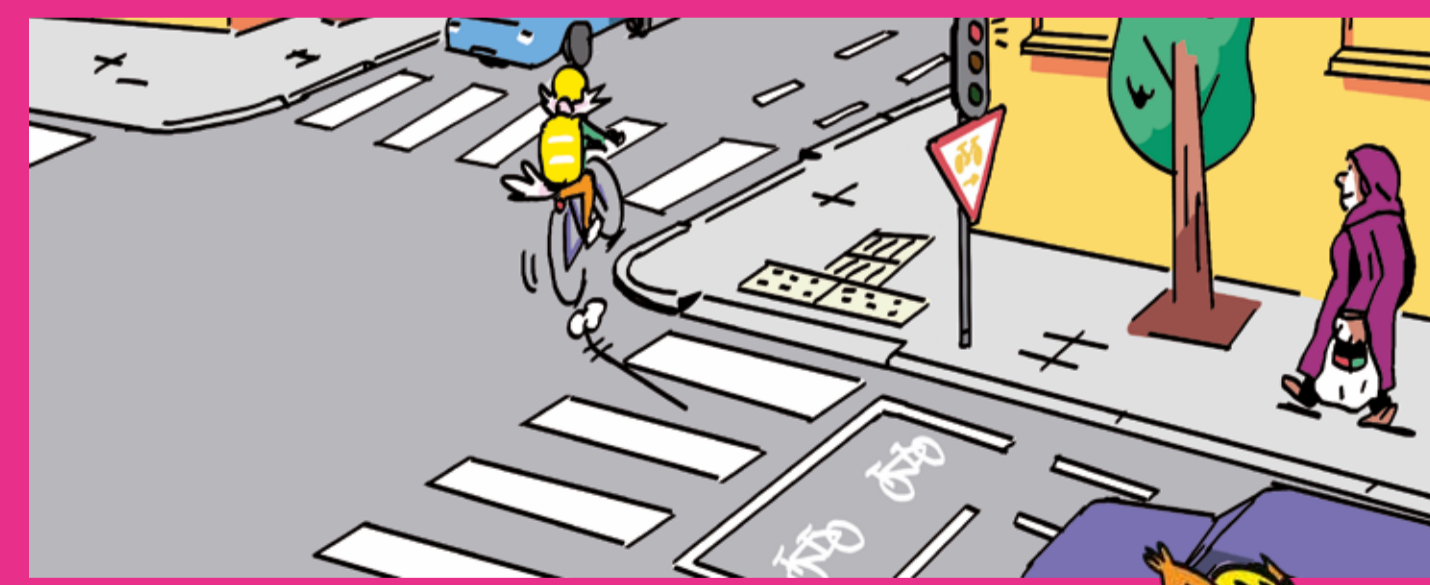
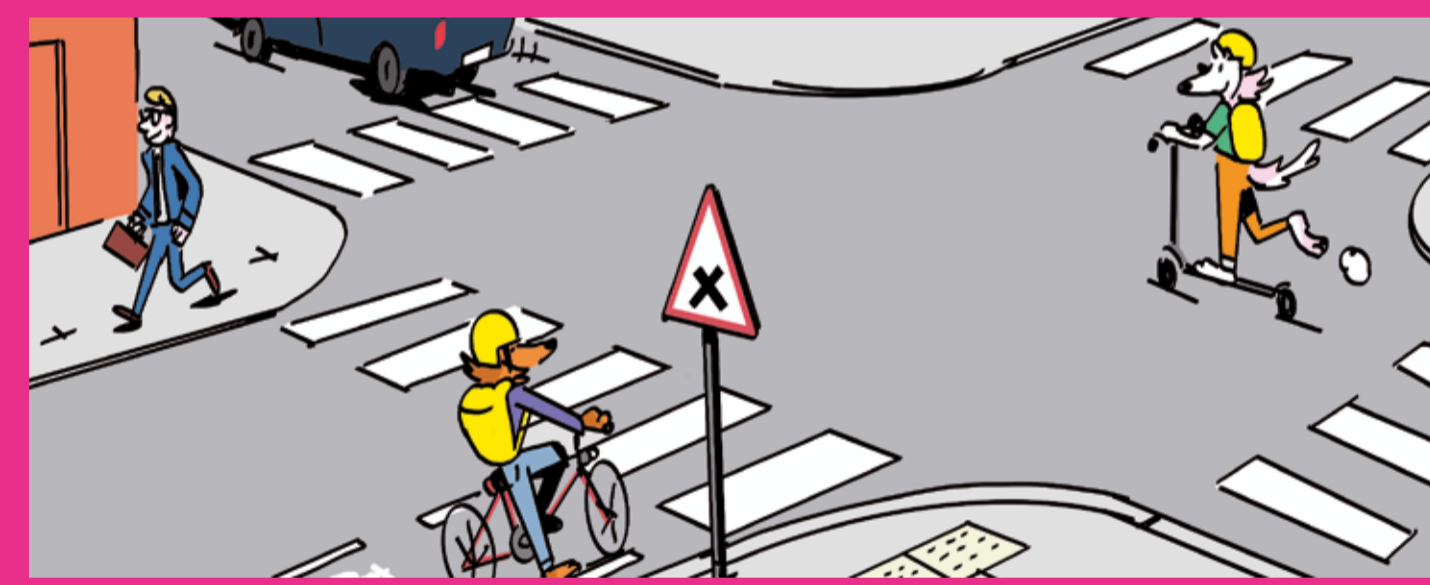
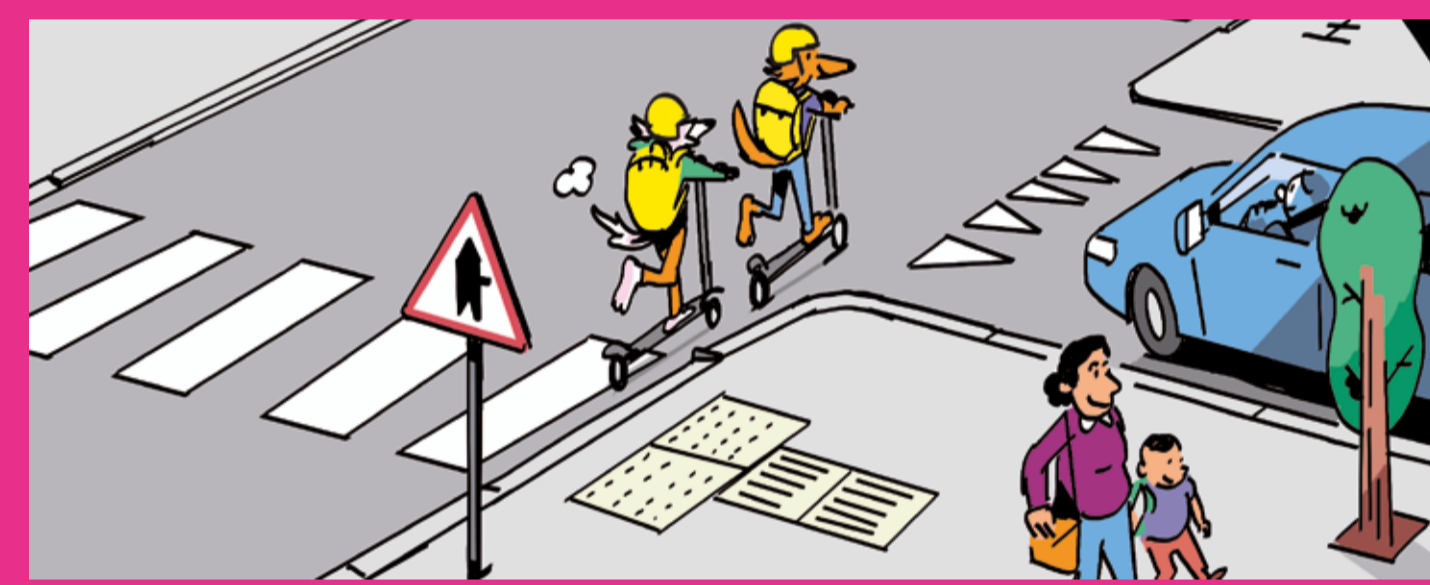
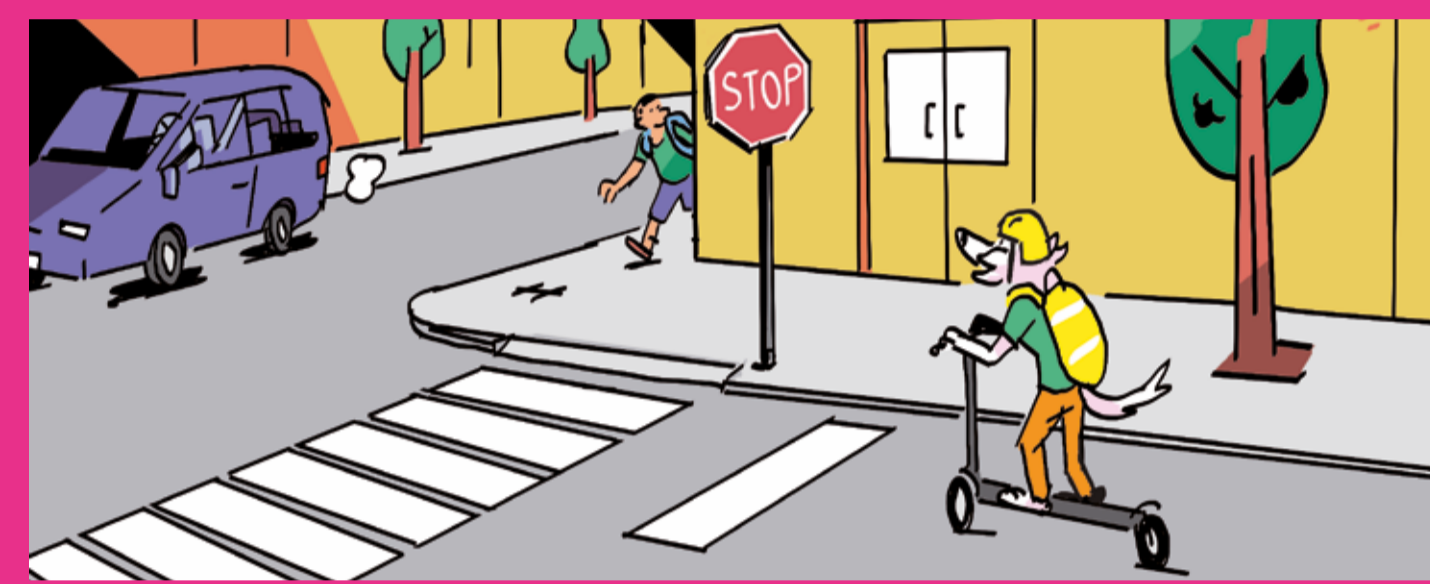
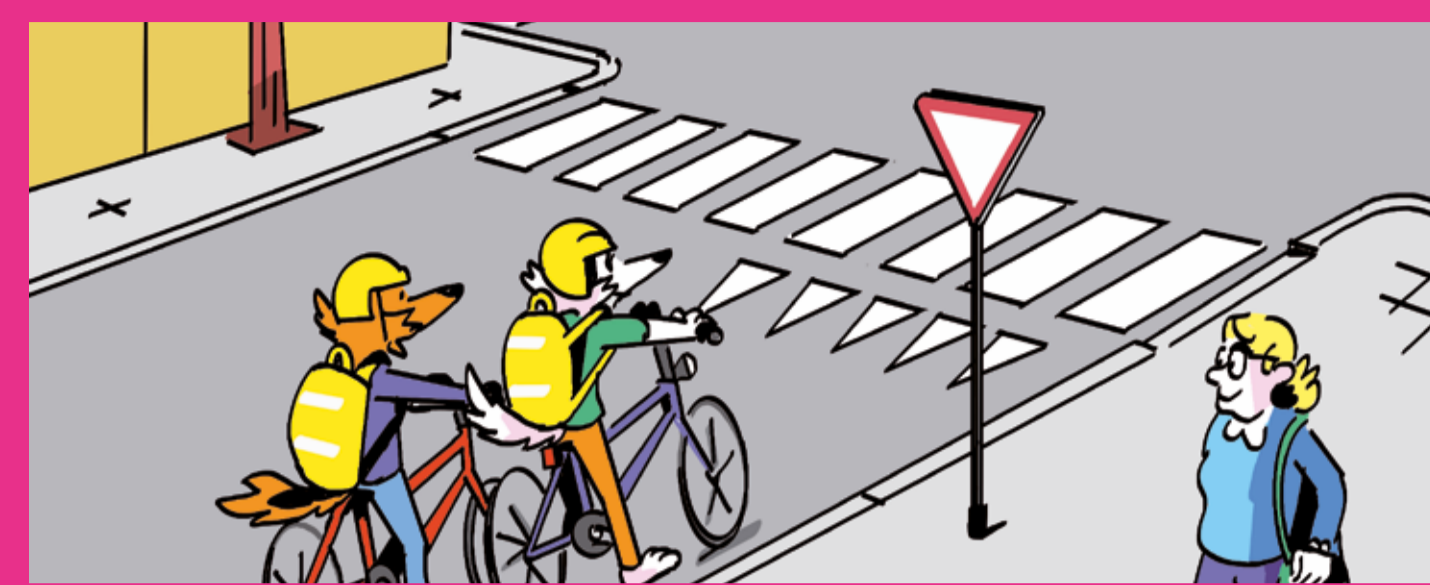
Exerce-toi sur [operation-cartable.mobilite.brussels](http://operation-cartable.mobilite.brussels)

OPÉRATION CARTABLE BRUXELLES MOBILITE SERVICE PUBLIC REGIONAL DE BRUXELLES Police

# Signaux de danger



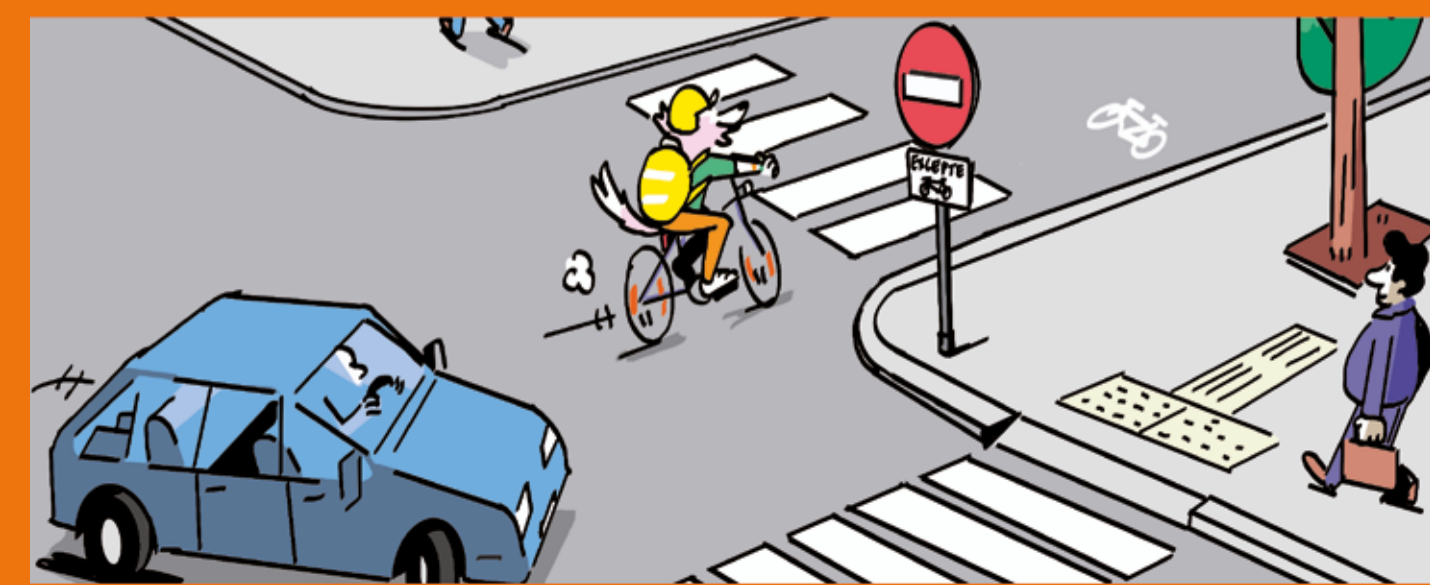
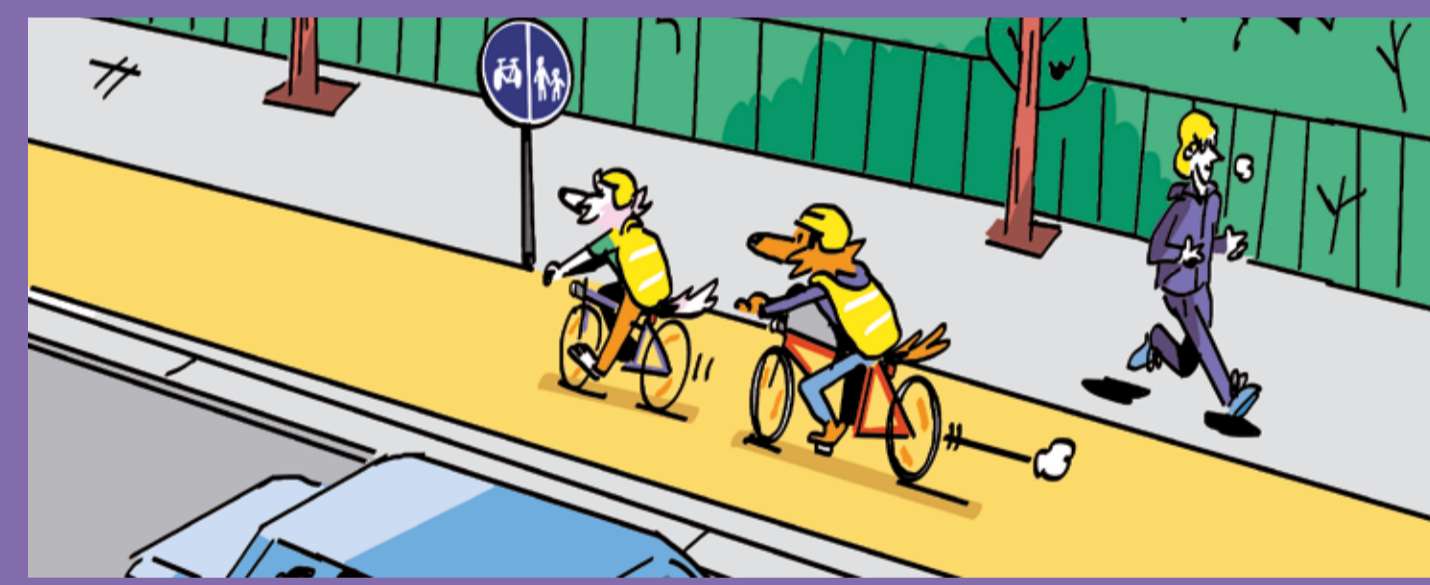
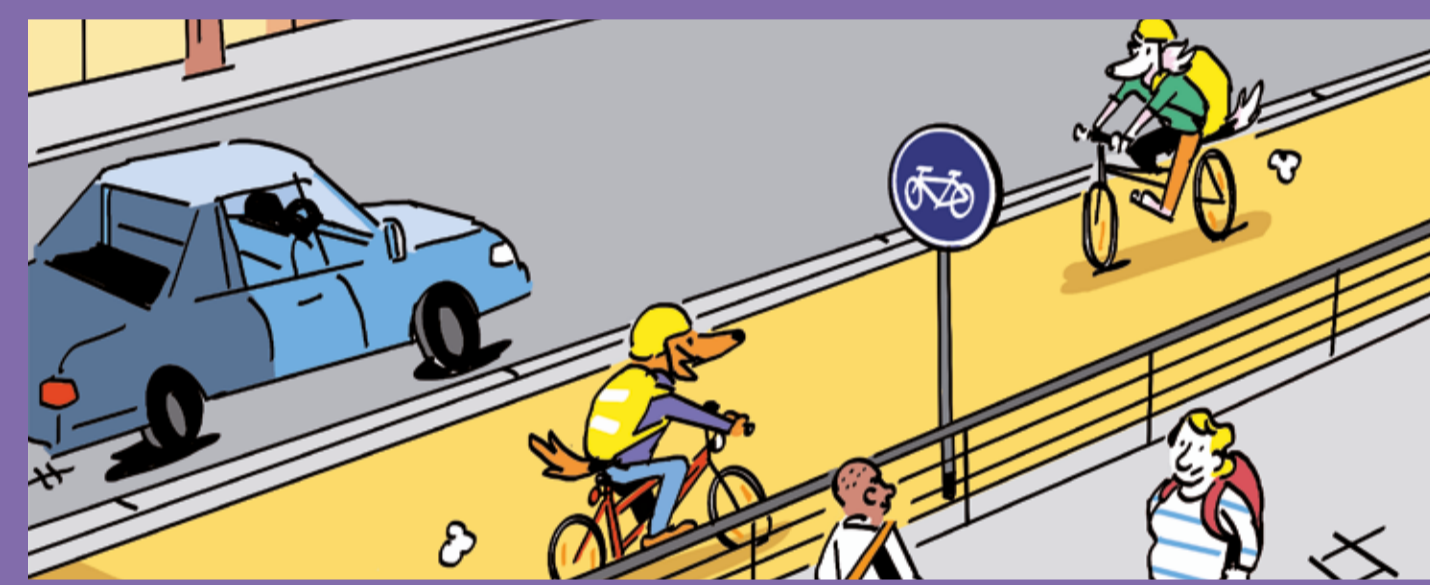
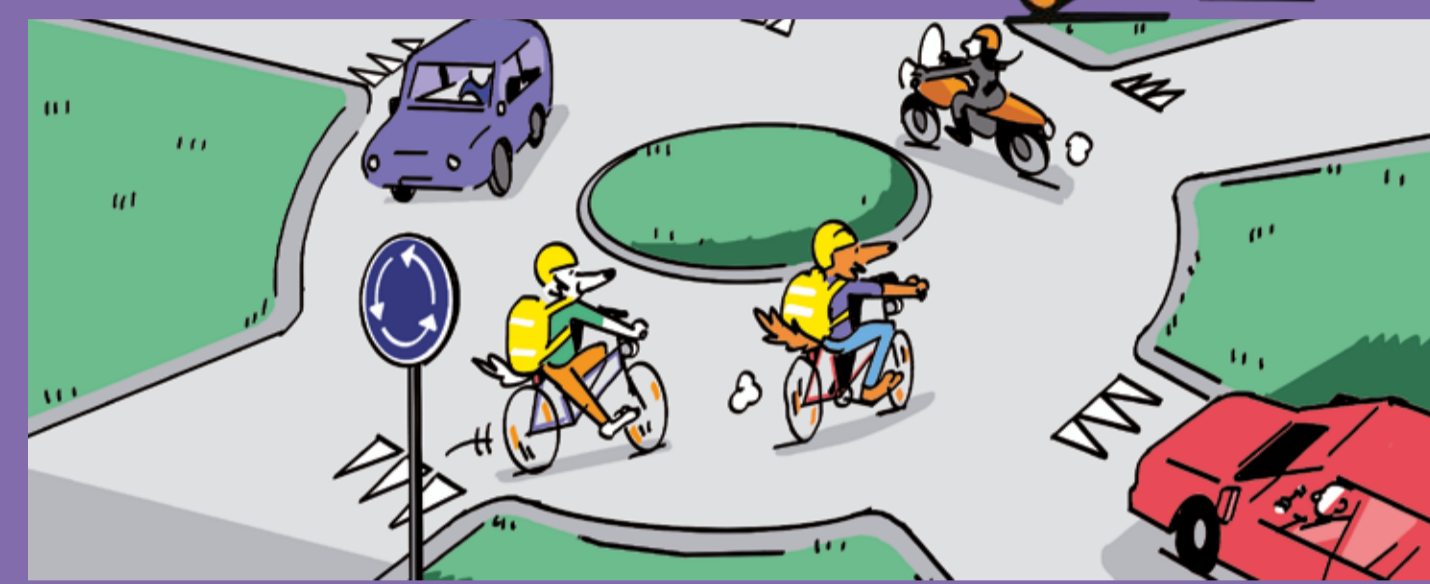
# Signaux de priorité



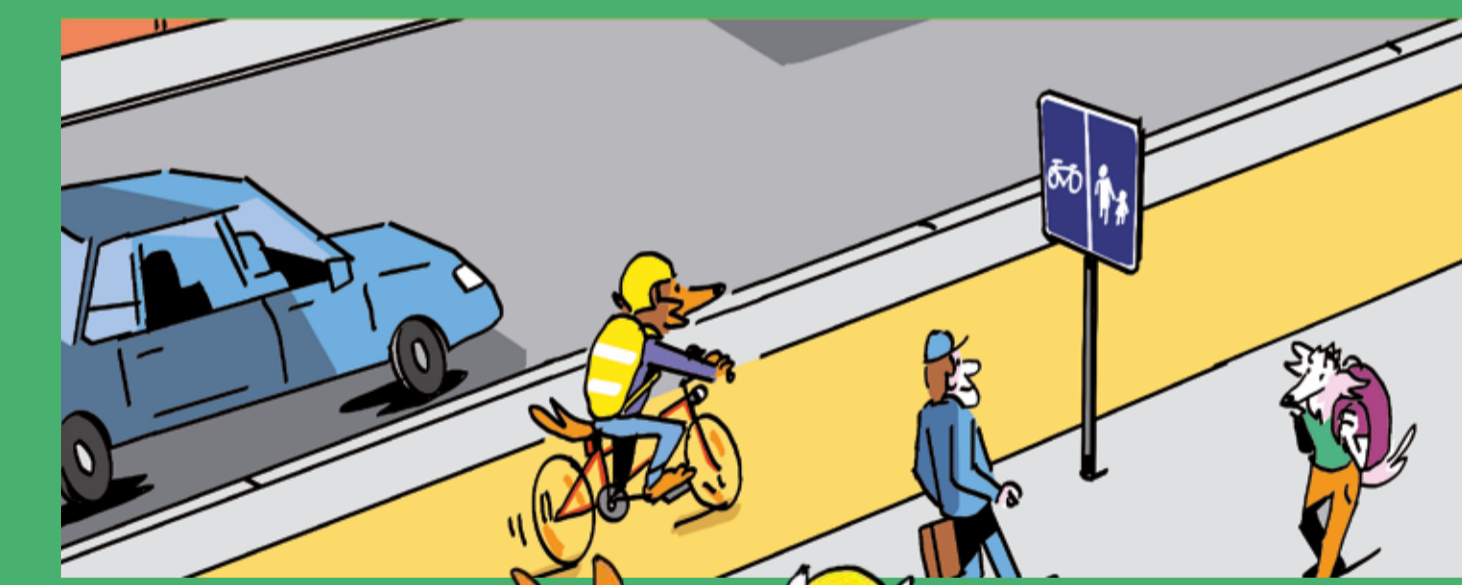
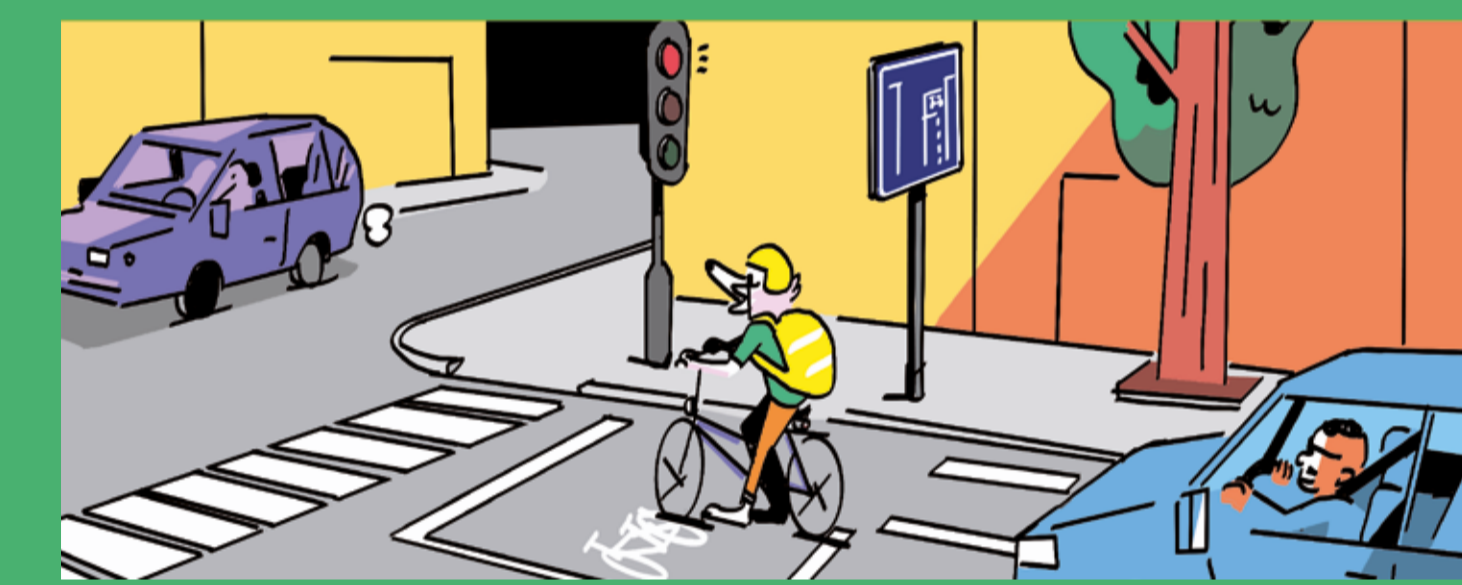
# Signaux d'interdiction



# Signaux d'obligation



# Signaux d'indication



© 1998 - Brussels Mobilité - Comité d'hygiène, de sécurité et de santé au travail - 1055 Brussels - Belgium - Design: Signaux - Illustrations: Moussette